

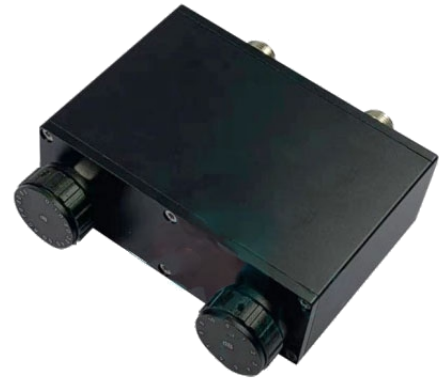
Manual Knob Variable Attenuator

- DC~6Hz, 0-90dB, 1dB step, 2W, N Female to N Female

Features:

Attenuation 0~90dB

1dB Step



Product ID	MAT-5NF-6G-90D-2	
Electrical & Mechanical Specifications		
Frequency Range (MHz)	DC~6GHz	
Attenuation Accuracy (dB)	≤ 60	> 60
	± 0.8	± 1.5
Step(dB)	1	
VSWR	≤ 1.50:1	
Power Capacity (W)	2	
Impedance (Ohm)	50	
Connector Interface	N-Female to N-Female	
Environmental Specifications		
Working Temperature	-20°C~+85°C	
Color	Black	
Dimensions(mm)	120 X 117.5 X 40	
Net Weight(kg)	0.5	

Outline Drawing

Dimensions are in millimeter

